

## MAX Production Box Quick Guide

SOURCE	HDMI SWITCH INPUT	NOVA VX4S INPUT	NOVA VX4S SCALE	AUDIO SELECTOR
<b>Computer HDMI</b>	1	HDMI	See Below	1/2
<b>Blu-Ray/DVD</b>	2	HDMI	Enable	1/2
<b>Dish/Wally</b>	3	HDMI	Enable	1/2
<b>IN 4</b>	4	HDMI	See Below	1/2
<b>DVI IN</b>	N/A	DVI	See Below	No Audio Capabilities
<b>SDI IN</b>	N/A	SDI	Enable	No Audio Capabilities
<b>AUX</b>	N/A	N/A	N/A	3/4

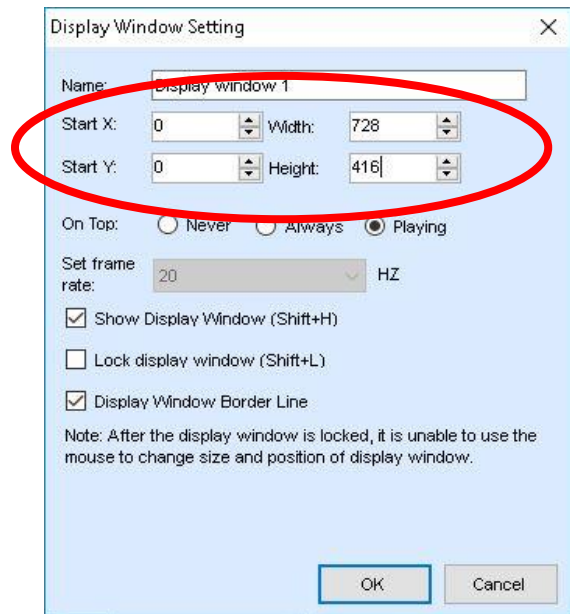
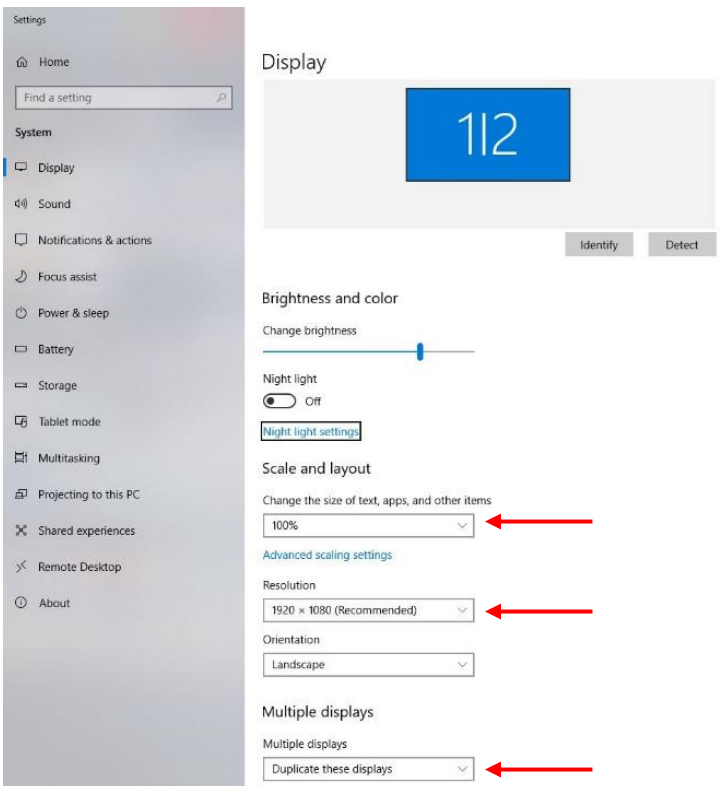
### SCALING

Scaling options vary by input type. If you are using a camera or other live video equipment you will usually want to enable scaling. When using a computer, the correct scaling depends on computer display settings and NovaStudio settings (if using NovaStudio). See below for scaling Guidelines.

**Duplicating/Mirroring Display:** Only enable scaling when using full screen desktop display and not NovaStar

Computer Display Settings (right click > Display Settings):

When Using NovaStudio set Display Settings to:  
(Open NovaStudio > Settings > Display Settings)



**Common Windows:**

Start at X=0 and Y=0.

To fill the screen: Width=728 and Height=416



## MAX Troubleshooting Quick Guide

Use the below instructions to solve the most common troubleshooting issues.

Before utilizing this troubleshooting guide please refer to "Production Box Quick Guide" to be sure that you have the correct input and scaling settings selected.

**RESEND BRIGHTNESS:** If certain panels are brighter or dimmer than others

1. On the NovaStar VX4S press the Menu button once to go to the Main Menu
2. Press the menu button once more to change the brightness percentage
3. Turn the menu button clockwise or counter clockwise to change the brightness percentage at least one percent up or down
4. Press the menu button once more to set the brightness percentage

All panels should now have a uniform brightness.

**RESEND RECEIVING CARD INFORMATION:** If certain panels are black, discolored, or have random lines of color.

1. Plug the USB cord that is ran through the back of the laptop drawer into the laptop
2. Open NovaLCT-Mars
3. Click the "User(U)" dropdown tab and click "Advanced User Login (A)"
4. Use password *admin* and click "Login"
5. Click the "Screen Configuration" button
6. Be sure that the current operation is the USB port that is plugged in and the "Configure Screen" box is checked. If so, click "Next"
7. Click the "Receiving Card" tab
8. Click "Load from File" button (towards the bottom right)
9. Find the file labeled "Receiving Card" (It should be in the Max Tech Files folder on the desktop) and click "Open"
10. Click the "Send to Receiving Cards" button (towards the bottom right)
11. Another window should pop up. In this window, be sure that "Send to all Receiving Cards" box is check and click "Send"

This should properly configure the receiving cards within each individual LED screen.

**RESEND MAPPING INFORMATION:** If all panels are showing a complete image but are "jumbled" or out of order.

1. Follow steps 1-6 above
2. Click the "Screen Connection" tab
3. Click "Load from File" button (towards the bottom right)
4. Find the file labeled "Max Mapping" (It should be in the Max Tech Files folder on the desktop) and click "Open"
5. Click "Send to HW"

This should send the proper data configuration to the LED screen.

### NOVASTUDIO RECOMMENDATIONS

- Close out of all other programs when running NovaStudio
- Compress large video files prior to playback. Compression will not affect output quality and will ensure seamless playback. The recommended compressed format is H.264 .mp4 compression.
- Recommended video format is .MP4
- Recommended image format .JPG